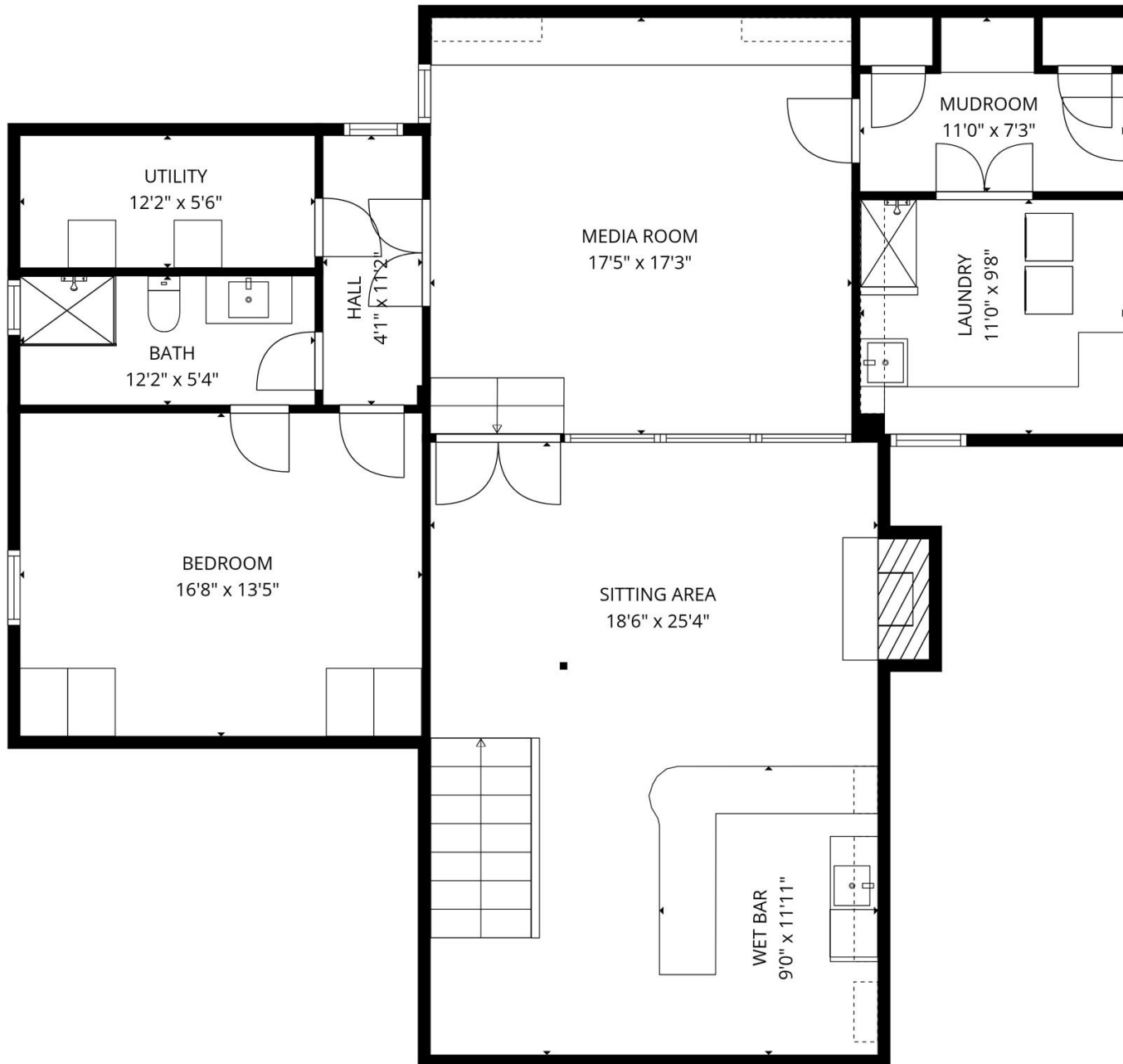




MODLIN GROUP  
HAMPTONS



BASEMENT

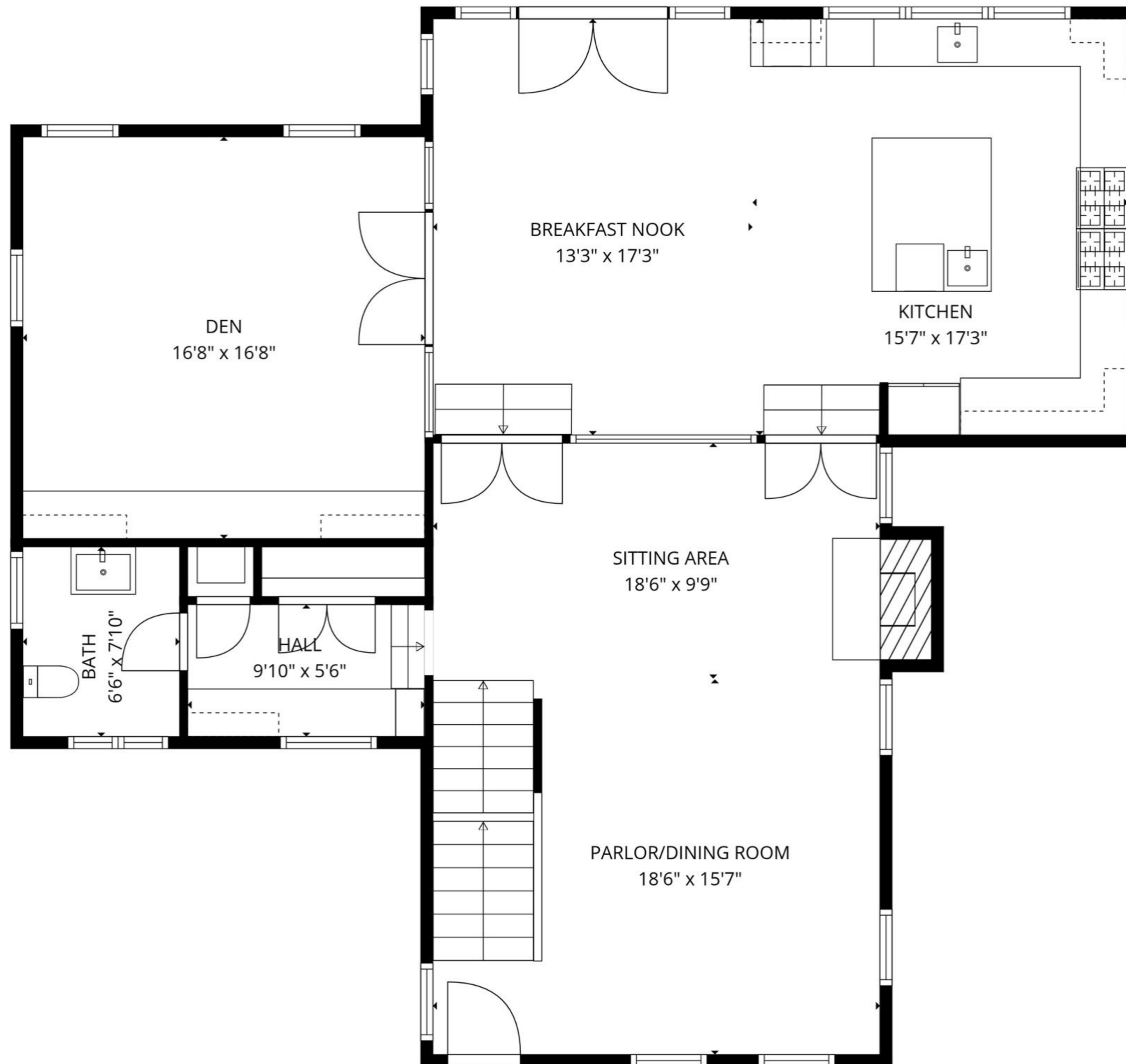
**TOTAL: 3925 sq. ft**

Basement 1: 1330 sq. ft, 1st floor: 1397 sq. ft, 2nd floor: 1198 sq. ft  
EXCLUDED AREAS: UTILITY: 67 sq. ft, FIREPLACE: 26 sq. ft, WALLS: 261 sq. ft

SIZES AND DIMENSIONS ARE APPROXIMATE, ACTUAL MAY VARY.



MODLIN GROUP  
HAMPTONS



## FIRST FLOOR

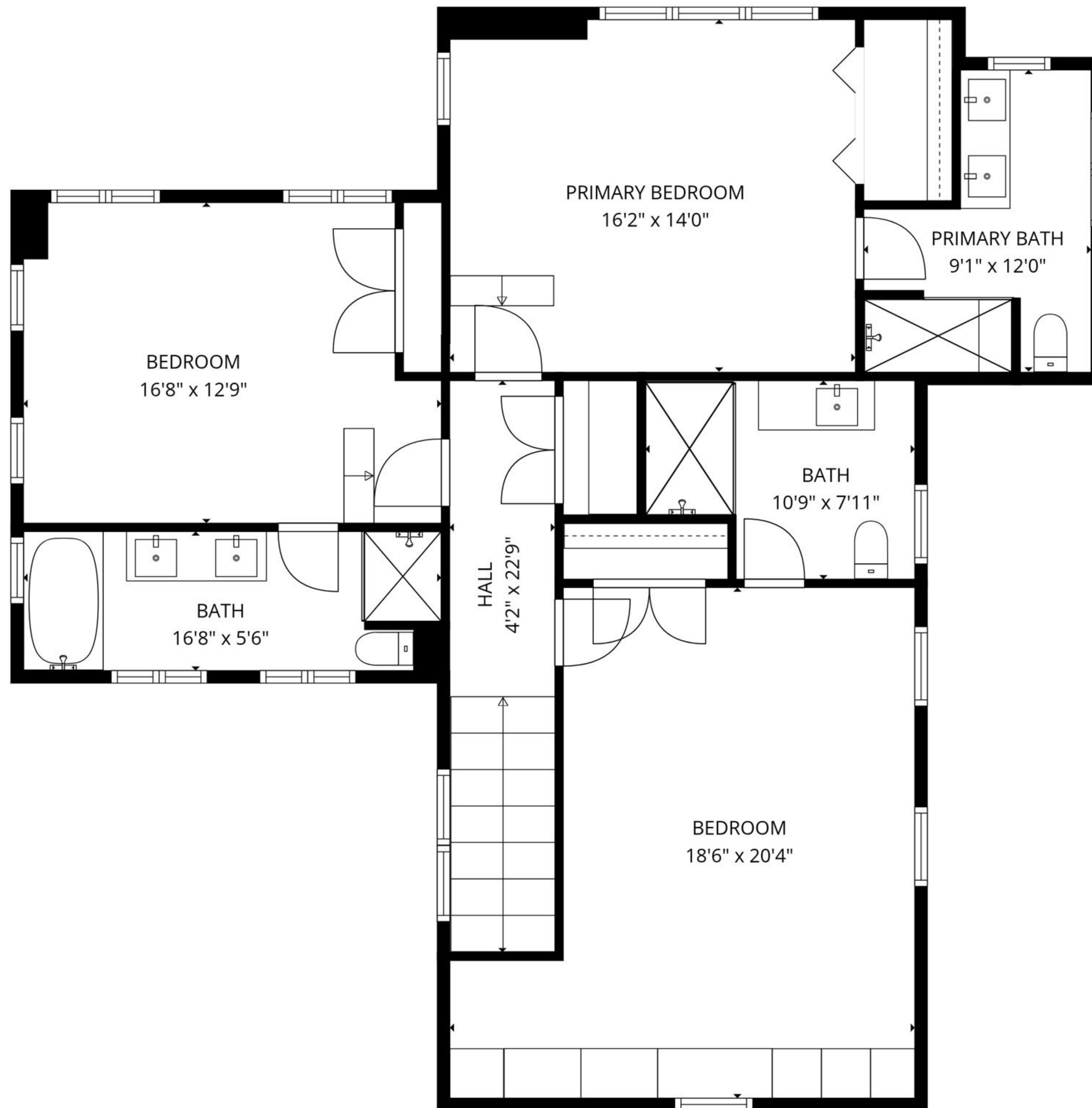
**TOTAL: 3925 sq. ft**

Basement 1: 1330 sq. ft, 1st floor: 1397 sq. ft, 2nd floor: 1198 sq. ft  
EXCLUDED AREAS: UTILITY: 67 sq. ft, FIREPLACE: 26 sq. ft, WALLS: 261 sq. ft

SIZES AND DIMENSIONS ARE APPROXIMATE, ACTUAL MAY VARY.



MODLIN GROUP  
HAMPTONS



## SECOND FLOOR

**TOTAL: 3925 sq. ft**

Basement 1: 1330 sq. ft, 1st floor: 1397 sq. ft, 2nd floor: 1198 sq. ft  
EXCLUDED AREAS: UTILITY: 67 sq. ft, FIREPLACE: 26 sq. ft, WALLS: 261 sq. ft

SIZES AND DIMENSIONS ARE APPROXIMATE, ACTUAL MAY VARY.



MODLIN GROUP  
HAMPTONS



2nd floor



1st floor



Basement 1

**TOTAL: 3925 sq. ft**

Basement 1: 1330 sq. ft, 1st floor: 1397 sq. ft, 2nd floor: 1198 sq. ft  
EXCLUDED AREAS: UTILITY: 67 sq. ft, FIREPLACE: 26 sq. ft, WALLS: 261 sq. ft

SIZES AND DIMENSIONS ARE APPROXIMATE, ACTUAL MAY VARY.